



Stainless Steel Hardware for Boats

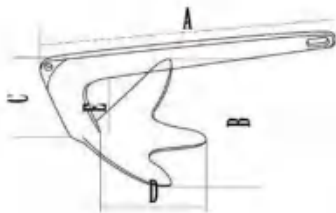


Catalogue

ANCHOR	01	LIFT RING	36
ANCHOR ROLLER	04	NON-SLIP FOLDING STEP PEDAL	37
ANCHOR SWIVEL	05	LOCK RING	38
CHAIN STOPPER	06	DECK FILLER	40
CABLEGUIDE	08	OUTLET	42
CLEAT	11	INTAKE STRAINER	43
BOLLARD	15	TANK VENT	44
TOP CAP	18	DRAIN	45
TOP SLIDE JAW SLIDE	20	ROD HOLDER	46
DECK HINGE	22	ANTENNA BASE	48
BRACKET	24	BOAT HOOK	49
ROUND BASE	26	DECK PLATE	50
FLAGPOLE BASE	28	LADDER	51
RAIL CONNECTOR	29	STEERING WHEEL	53
HAND RAIL	32	PAD EYE	55
CASTING HINGE	33	RIGGING	57

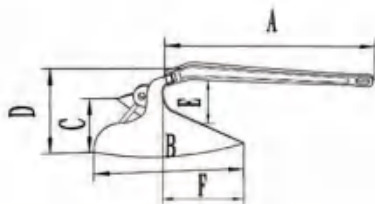
ANCHOR

Bruce Anchor 316 Stainless Steel

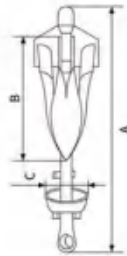


ITEM NO.	SPEC	A mm	B mm	C mm	D mm	E mm
SME001-001-0010	1KG	274	174	100	114	114
SME001-001-0020	2KG	350	220	125	140	95
SME001-001-0025	2.5KG	400	230	150	148	114
SME001-001-0030	3KG	391	254	145	164	103
SME001-001-0050	5KG	470	305	180	195	155
SME001-001-0075	7.5KG	538	345	200	222	140
SME001-001-0100	10KG	593	388	225	246	160
SME001-001-0150	15KG	677	440	260	280	183
SME001-001-0200	20KG	745	520	288	280	200
SME001-001-0250	25KG	805	560	305	300	215
SME001-001-0300	30KG	855	585	335	320	230
SME001-001-0400	40KG	923	634	384	353	257
SME001-001-0500	50KG	1000	685	380	385	260
SME001-001-0800	80KG	1110	755	460	420	290

Plough Anchor 316 Stainless Steel

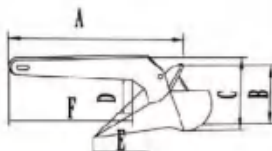


ITEM NO.	SPEC	A mm	B mm	C mm	D mm	E mm	F mm
SME001-002-0050	5KG	470	350	242	252	140	200
SME001-002-0070	7KG	504	395	265	250	147	220
SME001-002-0090	9KG	571	420	290	305	182	230
SME001-002-0100	10KG	575	423	298	305	185	230
SME001-002-0120	12KG	650	423	298	305	185	230
SME001-002-0150	15KG	687	558	325	355	205	275
SME001-002-0160	16KG	687	558	325	355	205	275
SME001-002-0200	20KG	713	560	375	355	203	310
SME001-002-0220	22KG	720	560	360	355	210	315
SME001-002-0270	27KG	780	605	405	393	230	325
SME001-002-0340	34KG	810	695	395	425	280	300
SME001-002-0350	35KG	835	653	645	465	290	380
SME001-002-0400	40KG	810	653	645	450	295	350
SME001-002-0500	50KG	965	745	540	500	290	405



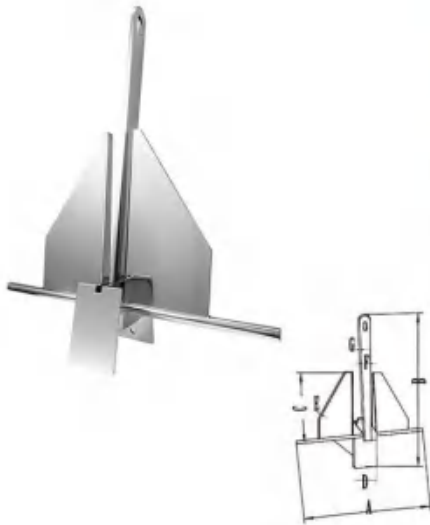
Grapnel Anchor 316 Stainless Steel

ITEM NO.	SPEC	A mm	B mm	C mm
SME001-003-0007	0.7KG	200	90	47
SME001-003-0015	1.5KG	302	135	54
SME001-003-0025	2.5KG	355	156	59
SME001-003-0032	3.2KG	395	174	73
SME001-003-0040	4KG	460	200	76
SME001-003-0050	5KG	470	210	80
SME001-003-0060	6KG	523	222	85
SME001-003-0070	7KG	530	230	90
SME001-003-0080	8KG	600	240	90
SME001-003-0100	10KG	655	260	102
SME001-003-0120	12KG	840	326	102



Delta Anchor 316 Stainless Steel

ITEM NO.	SPEC	A mm	B mm	C mm	D mm	E mm	F mm
SME001-004-0030	3KG	440	200	180	110	130	310
SME001-004-0040	4KG	518	220	195	120	145	310
SME001-004-0050	5KG	580	260	240	145	150	410
SME001-004-0060	6KG	580	260	240	145	150	410
SME001-004-0070	7KG	580	260	240	145	150	410
SME001-004-0075	7.5KG	610	270	285	150	200	440
SME001-004-0080	8KG	655	277	285	150	196	470
SME001-004-0100	10KG	680	280	296	160	210	480
SME001-004-0150	15KG	810	340	315	190	255	440
SME001-004-0200	20KG	840	365	339	200	270	465
SME001-004-0250	25KG	950	395	433	230	295	600
SME001-004-0300	30KG	1035	420	460	250	315	650
SME001-004-0400	40KG	1115	460	510	270	335	680
SME001-004-0500	50KG	1200	487	540	290	370	720
SME001-004-0600	60KG	1270	595	515	270	390	750
SME001-004-0800	80KG	1470	660	590	310	470	770



Bruce Anchor 316 Stainless Steel

ITEM NO.	SPEC	A mm	B mm	C mm	D mm	E mm	F mm	G mm
SME001-005-0050	5KG	450	540	265	135	5	40	8
SME001-005-0070	7KG	480	630	330	150	5	40	10
SME001-005-0100	10KG	500	705	358	175	6	50	10
SME001-005-0150	15KG	600	855	400	210	6	58	10
SME001-005-0200	20KG	630	860	445	220	8	60	12
SME001-005-0300	30KG	740	980	610	265	8	65	12
SME001-005-0400	40KG	805	1070	590	285	10	68	16
SME001-005-0500	50KG	865	1130	602	290	10	75	20



Plough Anchor 316 Stainless Steel

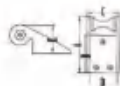
ITEM NO.	SPEC	A mm	B mm	C mm	D mm
SME001-006-0120	12KG	425	315	275	240
SME001-006-0200	20KG	455	385	300	325
SME001-006-0250	25KG	480	410	320	340
SME001-006-0300	30KG	505	430	335	365
SME001-006-0350	35KG	530	460	350	390
SME001-006-0450	45KG	575	490	375	415
SME001-006-0600	60KG	665	555	425	470
SME001-006-1000	100KG	775	655	505	555
SME001-006-1200	120KG	825	700	540	595
SME001-006-1400	140KG	870	735	570	625
SME001-006-1600	160KG	905	765	590	650
SME001-006-1800	180KG	945	800	620	680

ANCHOR ROLLER



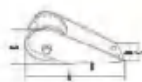
Anchor Bow Roller

ITEM NO.	SPEC	A mm	B mm	C mm	D mm	E mm	F mm	G mm
SME002-001-0608	5-10KG	380	260	65	46	295	28	8.6
SME002-001-0810	10-20KG	480	310	77	60	300	36	15
SME002-001-1012	20-30KG	540	330	72	355	355	45	16



Anchor Bow Roller

ITEM NO.	SPEC	A mm	B mm	C mm	D mm	E mm
SME002-002-01	Anchor Bow Roller	170	96	60	54	72



Anchor Bow Roller

ITEM NO.	SPEC	A mm	B mm	C mm	D mm	E mm
SME002-002-02	Anchor Bow Roller	170	100	51	45	75



Self-Launching Anchor Bow Roller

ITEM NO.	SPEC	A mm	B mm	C mm	D mm	E mm	F mm	G mm
SME002-004-4234	7.5-15KG	430	228	80	72	102	43	16
SME002-004-4235	10-20KG	580	390	80	72	150	43	16
SME002-004-4275	15-30KG	735	505	89	79	165	60	25
SME002-004-4295	30 - 50KG	892	615	100	90	225	70	36



Self-Launching Anchor Bow Roller

ITEM NO.	SPEC	A mm	B mm	C mm	D mm	E mm	F mm	G mm
SME002-004-4242	7.5-15KG	430	225	80	72	150	43	16
SME002-004-4256	10-20KG	580	390	80	72	150	43	16

ANCHOR SWIVEL



Swivel Anchor Connector

ITEM NO.	SPEC	A mm	B mm	C mm	D mm	E mm	F mm
SME003-001-0608	6-8	230	10	8	20.5	11	10
SME003-001-1012	10-12	305	14	12	28	15	12



Swivel Anchor Connector

ITEM NO.	SPEC	A mm	B mm	C mm	D mm	E mm	F mm	G mm
SME003-002-0608	6-8	91	10.5	8	15.5	10	23	11
SME003-002-1012	10-12	118	13	12	19	12	27.5	12



Two Segmen Swivel Anchor Connector

ITEM NO.	SPEC	A mm	B mm	C mm	D mm	E mm	F mm	G mm
SME003-003-0608A	6-8	91	10.5	8	15.5	10	23	10
SME003-003-1012A	10-12	118	13	12	19	12	27.5	12



Heavy Duty Two-Segment Swivel Anchor Connector

ITEM NO.	SPEC	A mm	B mm	C mm	D mm	E mm	F mm	G mm
SME003-003-0608B	6-8	91	10.5	8	15.5	10	23	10
SME003-003-1012B	10-12	116	13	12	18	12	28	12
SME003-003-1416B	14-16	141	18	14	31	16	31	17



Swivel Anchor Connector

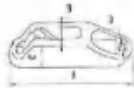
ITEM NO.	SPEC	A mm	B mm	C mm	D mm	E mm	F mm	G mm
SME003-004-0608A	6-8	120	10.5	8	15	10	21	10
SME003-004-1012A	10-12	151	13	12	18	12	28	12



Swivel Anchor Connector

ITEM NO.	SPEC	A mm	B mm	C mm	D mm	E mm	F mm	G mm
SME003-005-0608	6-8	85	9.5	8	16	10	21	10
SME003-005-1012	10-12	110	14.7	12	22	12	28	14

CHAIN STOPPER



Cleat Inox for ropes

ITEM NO.	SPEC	A mm	B mm	C mm	D mm
SME004-001-1221		82	18	24	5.5
SME004-001-1224	Cleat inox for ropes	82	18	24	5.5
SME004-001-K70		70	17	19	5.5



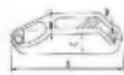
Cleat Inox for ropes

ITEM NO.	SPEC	A mm	B mm	C mm	D mm
SME004-001-1223	Cleat inox for ropes	47.7	14.5	17	5.5



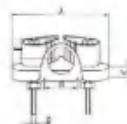
Cleat Inox for ropes

ITEM NO.	SPEC	A mm	B mm	C mm	D mm
SME004-001-1222	Cleat inox for ropes	54.5	17	19	5.5



Cleat Inox for ropes

ITEM NO.	SPEC	A mm	B mm	C mm	D mm
SME004-001-K55	Cleat inox for ropes	55	15	19	5.5



Rope Clamp Cam Cleat

ITEM NO.	SPEC	A mm	B mm	C mm	D mm	E mm
SME004-002-68	Rope Clamp Cam Cleat	68	18.5	7	M5	15.5



Anchor Chain Lock

ITEM NO.	SPEC	A mm	B mm	C mm	D mm
SME004-003-0608A	6-8MM	10	66	121	9
SME004-003-1012A	10-12MM	14.5	100	160	13



Anchor Chain Stopper

ITEM NO.	SPEC	A mm	B mm	C mm	D mm	E mm
SME004-004-0608	6-8MM	59.5	53.5	48	8	10.8
SME004-004-1012	10-12MM	80.2	70	62	12.5	13



Anchor Chain Stopper

ITEM NO.	SPEC	A mm	B mm	C mm	D mm
SME004-005-01	Anchor Chain Stopper	101.5	40.2	35.6	5



Anchor Chain

ITEM NO.	SPEC	A mm	B mm	C mm	D mm
SME003-766-06	DIN766 6MM	18.5	20.2	6	16
SME003-766-08	DIN766 8MM	24	27.2	8	32
SME003-766-10	DIN766 10MM	30	34	10	50
SME003-766-12	DIN766 12MM	34	40.8	12	66
SME003-766-14	DIN766 14MM	41	47.5	14	100

CABLEGUIDE



Bow Chocks

ITEM NO.	SPEC	A mm	B mm	C mm	D mm
SME005-002-01	Bow Chocks	108	78	42	15.5



Bow Chocks

ITEM NO.	SPEC	A mm	B mm	C mm	D mm
SME005-002-02	Bow Chocks	103.5	78	48	17.5



Bow Chocks

ITEM NO.	SPEC	A mm	B mm	C mm	D mm
SME005-003-4*	4"	102	82.5	46.5	17.5
SME005-003-5*	5"	126	99	53	18
SME005-003-6*	6"	152	122.5	78	21
SME005-003-8*	8"	202	167.5	102.5	25
SME005-003-9*	9"	230	182	103	28



Bow Chocks

ITEM NO.	SPEC	A mm	B mm	C mm	D mm
SME005-004-6*L	6" Left	155	124.5	29	21
SME005-004-6*R	6" Right	155	124.5	29	21
SME005-004-8*L	8" Left	204	165	55	27
SME005-004-8*R	8" Right	204	165	55	27
SME005-004-10*L	10" Left	260	210	60	32
SME005-004-10*R	10" Right	260	210	60	32



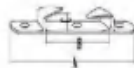
Bow Chocks

ITEM NO.	SPEC	A mm	B mm	C mm	D mm	E mm	D mm	E mm
SME005-001-280L	280MM Left	280	80	80	57	100	234	49.5
SME005-001-280R	280MM Right	280	80	80	57	100	234	49.5



Bow Chocks

ITEM NO.	SPEC	A mm	B mm	C mm	D mm
SME005-005-5*L	5" Left	118.5	84	46	15.5
SME005-005-5*R	5" Right	118.5	84	46	15.5
SME005-005-6*L	6" Left	151	117	78	17.5
SME005-005-6*R	6" Right	151	117	78	17.5



Bow Chocks

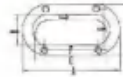
ITEM NO.	SPEC	A mm	B mm
SME005-008-4 1/2*L	4 1/2" Left	114	58
SME005-008-4 1/2*R	4 1/2" Right	114	58
SME005-008-6*L	6" Left	155	72
SME005-008-6*R	6" Right	155	72



Bow Chocks

ITEM NO.	SPEC	A mm	B mm	C mm	D mm
SME005-009-4 1/2*L	4 1/2" Left	118	49.5	57	14
SME005-009-4 1/2*R	4 1/2" Right	118	49.5	57	14
SME005-009-6*L	6" Left	153	62.5	60	17.5
SME005-009-6*R	6" Right	153	62.5	60	17.5

Oval Hawse Pipe



ITEM NO.	SPEC	A mm	B mm	C mm	D mm	E mm	F mm	G mm
SME006-001-9538	95*38	138	62	95	38	21	109.5	34.5
SME006-001-17575	175*75	237	135	175	75	24.5	177	84.5



Oval Hawse Pipe

ITEM NO.	SPEC	A mm	B mm	C mm	D mm	E mm	F mm	G mm
SME006-002-10050	100*50	150	82	100	50	28	122.5	47.5



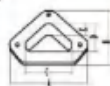
Bow Chocks

ITEM NO.	SPEC	A mm	B mm	C mm	D mm
SME005-003-8"	8"	205	120	34	40
SME005-003-10"	10"	257	154	52	46



Hawse Pipe

ITEM NO.	SPEC	A mm	B mm	C mm	D mm	E mm
SME006-004-27093	Hawse Pipe	345	168	270	93	125



Hawse Pipe

ITEM NO.	SPEC	A mm	B mm	C mm	D mm	E mm
SME006-005-16095	Hawse Pipe	268	172	160	95	34

CLEAT



Hollow Base Cleat



ITEM NO.	SPEC	A mm	B mm	C mm	D mm	E mm	F mm
SME007-001-4A	4°	102	37	23	52	21	8.5
SME007-001-5A	5°	125	38	25	55	27.5	12
SME007-001-6A	6°	150	44	26.5	57	31	14
SME007-001-8A	8°	200	51	34	72	36.5	18
SME007-001-10A	10°	252	66	47	95	44	20
SME007-001-12A	12°	300	70	49	96	52.5	28
SME007-001-15A	15°	376	80	59	128	61.5	35

Heavy Duty Cleat



ITEM NO.	SPEC	A mm	B mm	C mm	D mm	E mm	F mm
SME007-001-4B	4°	100	37	24	49	24.5	10
SME007-001-5B	5°	127	38.5	26	57	29	13.5
SME007-001-6B	6°	151	45	28.5	57.5	30	12.5
SME007-001-8B	8°	200	55	34	73	38	16
SME007-001-10B	10°	256	65	46.5	94	44	17
SME007-001-12B	12°	300	70	50	110	55	24

Super Heavy Duty Cleat



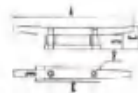
ITEM NO.	SPEC	A mm	B mm	C mm	D mm	E mm	F mm
SME007-001-6C	6°	152	43	26	57	32	12
SME007-001-8C	8°	203	60	37	73	53	25
SME007-001-100	10°	256	71	47	96	60	30
SME007-001-12C	12°	305	89	62	123	70	33

Low Silhouette Cleat



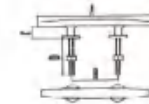
ITEM NO.	SPEC	A mm	B mm	C mm	D mm	E mm	F mm
SME007-002-4"	4"	100	37	24.5	29.5	25	11
SME007-002-5"	5"	124	47	30	41	28	15
SME007-002-6"	6"	150	59	42.5	40	33	14
SME007-002-8"	8"	200	59	41.5	56	37	19
SME007-002-10"	10"	248	64	45	56.5	42	22.5
SME007-002-12"	12"	300	75	48	95	56	26.5

Mast Cleat



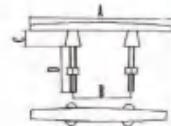
ITEM NO.	SPEC	A mm	B mm	C mm	D mm	E mm	F mm
SME007-003-4"	4"	100	15.5	26.5	20	30	4.6
SME007-003-5"	5"	125	18	30	21.5	35	4.5
SME007-003-6"	6"	150	21	31	24	45	5
SME007-003-8"	8"	200	25	36	28	55	8
SME007-003-10"	10"	250	28	40	30	65	10

Stud Mounted Cleat



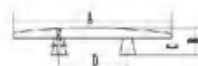
ITEM NO.	SPEC	A mm	B mm	C mm	D mm
SME007-004-6A	6"	150	65	19	45
SME007-004-8A	8"	200	85	25	45
SME007-004-10A	10"	250	105	28	50

Stud Mounted Humpbacked Cleat

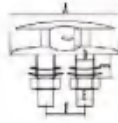


ITEM NO.	SPEC	A mm	B mm	C mm	D mm
SME007-004-6B	6"	150	45	19	45
SME007-004-8B	8"	200	60	25	45
SME007-004-10B	10"	250	75	28	50

Heavy Duty Humpbacked Cleat

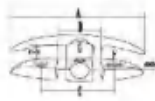


ITEM NO.	SPEC	A mm	B mm	C mm	D mm	E mm	F mm
SME007-004-8C	8"	203	48	35	84	M12	
SME007-004-10C	10"	254	53	38	97	M12	
SME007-004-120	12"	306	60	43	115	M14	
SME007-004-15C	15"	380	72	52	139	M14	



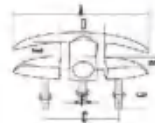
Retractable Cleat

ITEM NO.	SPEC	A mm	B mm	C mm	D mm	E mm	F mm
SME007-006-5*	5"	125	30	25	21	19	45
SME007-006-6*	6"	157	30	25	21	19	59



Folding Cleat

ITEM NO.	SPEC	A mm	B mm	C mm	D mm	E mm	F mm	G mm
SME007-007-5A	5"	129	36	71	40.5	17.5	5.5	4
SME007-007-6A	6"	155	55	85.5	49	20	8.2	5.2
SME007-007-8A	8"	218	75	119	68	28	8.2	5



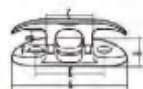
Stud Mounted Folding Cleat

ITEM NO.	SPEC	A mm	B mm	C mm	D mm	E mm	F mm	G mm
SME007-007-5B	5"	129	36	71	40.5	17.5	M6	35
SME007-007-6B	6"	155	55	85.5	49	20	M8	40
SME007-007-8B	8"	218	75	119	68	28	M8	40



Pull Up Cleat

ITEM NO.	SPEC	A mm	B mm	C mm	D mm	E mm	F mm
SME007-008-5*	5"	125	12	10.5	5.8	45	97
SME007-008-6*	6"	155	17	20	7.8	58	127
SME007-008-8*	8"	210	25	25	9.8	77	155
SME007-008-10*	10"	260	25	31	11.8	92	190
SME007-008-12*	12"	300	35	35	11.8	112	223



Flip Up Cleat

ITEM NO.	SPEC	A mm	B mm	C mm	D mm
SME007-009-4 1/2"	4 1/2"	118	42	47	28
SME007-009-6"	6"	152	51	60	30
SME007-009-8"	8"	200	66	80	35

Flip Up Cleat



ITEM NO.	SPEC	A mm	B mm	C mm	D mm
SME007-009-4 1/2"	4 1/2"	118	42		28
SME007-009-6"	6"	152	51		30
SME007-009-8"	8"	200	66		35

K Style Cleat



ITEM NO.	SPEC	A mm	B mm	C mm	D mm	E mm
SME007-010-8A	8 "	212	6	36	M8	47.5
SME007-010-8B	Heavy Duty 8"	212	6	36	M8	47.5

Lift Ring Cleat



ITEM NO.	SPEC	A mm	B mm	C mm	D mm	E mm	F mm
SME007-011-6"	6"	150	70	50	16	5	21

S Style Cleat



ITEM NO.	SPEC	A mm	B mm	C mm	D mm	E mm
SME007-012-10"	10"	260	70	40.5	114.5	M12

Tie Down Cleat



ITEM NO.	SPEC	A mm	B mm	C mm
SME007-013-2 3/5"	2 3/5"	67	10	10
SME007-013-4 1/2"	4 1/2"	112	13	20
SME007-013-6"	6"	151	18	25

BOLLARD

Dock Bollard



ITEM NO.	SPEC	A mm	B mm	C mm	D mm	E mm	F mm	G mm
SME007-001-4A	10"	260	200	56	100	65	140	14
SME007-001-5A	12"	315	225	46.5	123	80	176.5	14

Dock Angled Cleat



ITEM NO.	SPEC	A mm	B mm	C mm	D mm	E mm	F mm	G mm
SME008-001-12B	12"	300	228	50	94	64	89*2	14.1

Single Cross Bollard



ITEM NO.	SPEC	A mm	B mm	C mm	D mm	E mm	F mm	G mm	H mm	I mm
SME008-002-6363	6363	81	82	21	15	30	20	38.5	33.5	5

Single Cross Bollard



ITEM NO.	SPEC	A mm	B mm	C mm	D mm	E mm	F mm	G mm	H mm
SME008-002-8080	8080	110	120	80	80	31	55	55	27

Double Cross Bollard

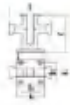


ITEM NO.	SPEC	A mm	B mm	C mm	D mm	E mm
SME008-002-15063	Double Cross Bollard	165	66	20	17	30
F mm	G mm	H mm	I mm	J mm		
19	40.5	118	5	85		



Angled Cross Bollard

ITEM NO.	SPEC	A mm	B mm	C mm	D mm	E mm	F mm	G mm	H mm	I mm
SME008-002-9562	9562	86	100	25	40	26	95	62	5.2	M10



Split Bollard

ITEM NO.	SPEC	A mm	B mm	C mm	D mm	E mm
SME008-002-61A	Split Bollard	61	98	86	40	6.8



Split Bollard & Locking Pin

ITEM NO.	SPEC	A mm	B mm	C mm	D mm	E mm	F mm
SME008-002-61B	Split Bollard & Locking Pin	61	127	86	40	6.8	9



Single Cross Bollard

ITEM NO.	SPEC	A mm	B mm	C mm	D mm	E mm	F mm	G mm	H mm
SME008-003-100100	Single Cross Bollard	100	100	150	135	42	70	70	10.2
SME008-003-135135		135	135	190	170	50	84.5	84.5	12.2
SME008-003-195150		195	150	250	240	80	138	98	12.2
SME008-003-240190		240	190	300	300	100	185.5	13.5	14.4



Single Cross Bollard

ITEM NO.	SPEC	A mm	B mm	C mm	D mm	E mm	F mm	G mm	H mm
SME008-004-120	120	120	95	130	61	162	83	73	8.5
SME008-004-150	150	150	120	155	76	198	102	86.5	8.5

Hollow Base Cleat Bollard



ITEM NO.	SPEC	A mm	B mm	C mm	D mm	E mm	F mm	G mm
SME008-005-6"	6"	153	90	31	45	29	47	M8
SME008-005-8"	8"	203	120	35	58	37	69	M10
SME008-005-10"	10"	254	161	50	77	52	84.5	M16
SME008-005-12"	12"	305	161	50	76	52	84.5	M16
SME008-005-12"	Heavy duty 12"	305	161	50	78	52	84.5	M16

Double Horn Bollard



ITEM NO.	SPEC	A mm	B mm	C mm	D mm	E mm	F mm	G mm
SME008-006-6"	6"	152	60	62	45	45	45	45
SME008-006-8"	8"	203	70	77	57	57	57	57
SME008-006-10"	10"	255	80	91	103	103	103	103
SME008-006-12"	12"	310	90	109	130	130	130	130



Yacht Cable Guide Bollard

ITEM NO.	SPEC	A mm	B mm	C mm	D mm	E mm	F mm	G mm
SME008-007-8"	8"	254	126	44	46	27	25	12.3



Heavy Duty Cable Guide Yacht Bollard

ITEM NO.	SPEC	A mm	B mm	C mm	D mm	E mm	F mm	G mm
SME008-008-12"	12"	300	167	137	105	56	94	M20

TOP CAP

Eye End Top Cap

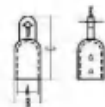


ITEM NO.	SPEC	A mm	B mm	C mm	D mm	E mm
SME009-001-3/4"	19MM	19.5	25	55	6.5	7
SME009-001-20	20MM	20.5	26.5	55	6.5	7
SME009-001-7/8"	22MM	22.5	28.8	58	6.5	7
SME009-001-1"	25MM	25.8	31.8	56	6.5	7
SME009-001-30	30MM	30.8	37.5	61	6.5	7.2
SME009-001-1 1/4"	32MM	32.8	39.6	61	6.5	7.2



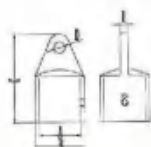
Heavy Duty Eye End Top Cap

ITEM NO.	SPEC	A mm	B mm	C mm	D mm	E mm
SME009-001-25B	25MM	25.8	32.5	57	8.2	7
SME009-001-30B	30MM	30.8	37.5	61	8.2	7.2
SME009-001-32B	32MM	32.8	39.6	61	8.2	7.2



Heavy Duty Eye End Top Cap

ITEM NO.	SPEC	A mm	B mm	C mm	D mm	E mm
SME009-002-22A	7/8"	22.7	29.5	70.0	6.7	7.0
SME009-002-25A	1"	25.8	33.2	70.0	6.7	7.0
SME009-002-22B	22MM	22.5	28.5	61.0	6.6	5.5
SME009-002-25B	25MM	25.6	30.8	7.2	6.6	5.5



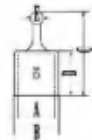
Eye End Caps Cap

ITEM NO.	SPEC	A mm	B mm	C mm	D mm	E mm
SME009-003-7/8"	22MM	22.5	28.5	52.5	6.4	6.0
SME009-003-1"	25MM	25.7	31.5	54.0	6.4	6.3
SME009-003-30	30MM	30.5	38.0	66.5	8.0	7.0
SME009-003-1 1/4"	32MM	32.6	40.0	72.0	8.0	7.0



Heavy Duty Eye End Caps Cap

ITEM NO.	SPEC	A mm	B mm	C mm	D mm	E mm	F mm
SME009-004-7/8"	22MM	22.6	29.0	59.0	6.5	6.2	6
SME009-004-1"	25MM	25.8	33.0	59.0	5.5	6.2	6
SME009-004-30	30MM	30.5	39.0	72.0	6.4	6.8	7
SME009-004-1 1/4"	32MM	32.4	40.0	72.0	6.5	6.8	6



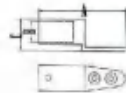
Top Cap Ball Socket

ITEM NO.	SPEC	A mm	B mm	C mm	D mm	E mm
SME009-005-7/8"	22MM	22.4	27.8	62.5	31.0	13.8
SME009-005-1"	25MM	25.6	30.6	68.6	32.0	13.8



Bimini Top Fittings Inside Eye End

ITEM NO.	SPEC	A mm	B mm	C mm	D mm	E mm
SME009-006-7/8"	22MM	48.0	22.0	18.8	6.4	6.0
SME009-006-1"	25MM	50.0	25.0	21.6	6.8	6.0



Handrail Blind Base

ITEM NO.	SPEC	A mm	B mm	C mm
SI SME009-007-1"	25MM	87.0	25.8	34.2

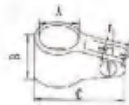


Square Inside Eye End

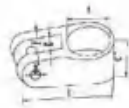
ITEM NO.	SPEC	A mm	B mm	C mm	D mm	E mm
SME009-009-1 1/4"	32MM	32.3	27.8	45	6.6	6.3
SME009-009-1	28MM	27.4	21.5	42.6	6.6	6.3

TOP SLIDE JAW SLIDE

Top Slide



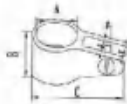
ITEM NO.	SPEC	A mm	B mm	C mm	D mm	E mm	F mm
SME010-001-3/4"	19MM	19.6	25	45	7.5	16.5	6.2
SME010-001-20	20MM	20.4	25	45	7.5	16.5	6.2
SME010-001-7/8"	22MM	22.5	28	52	7.8	16.5	6.2
SME010-001-1"	25MM	25.8	28.5	54	8	16.5	6.2
SME010-001-30	30MM	30.8	29	62	7.6	17.5	6.2
SME010-001-1 1/4"	32MM	32.8	30	68	8	17.5	6.2



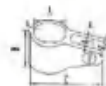
Heavy Duty Top Slide

ITEM NO.	SPEC	A mm	B mm	C mm	D mm	E mm	F mm
SME010-001-1"	25MM	22.7	55.5	28.5	8	10.2	27.3
SME010-001-30B	30MM	30.8	29	62	8	17.5	7.8
SME010-001-1 1/4"	32MM	32.8	30	68	8	17.5	7.8

Double Set Screw Jaw Slide



ITEM NO.	SPEC	A mm	B mm	C mm	D mm	E mm	F mm
SME010-002-19A	3/4"	19.6	25	45	7.8	16.5	6.2
SME010-002-20A	20MM	20.4	25	45	7.8	16.5	6.2
SME010-002-22A	7/8"	22.5	28	52	7.8	16.5	6.2
SME010-002-25A	1"	25.8	28.5	54	7.8	16.5	6.2
SME010-002-30A	30MM	30.8	29	62	7.8	17.5	6.2
SME010-002-32A	1 1/4"	32.8	30	68	7.8	17.5	6.2



Heavy Duty Double Set Screw Jaw Slide

ITEM NO.	SPEC	A mm	B mm	C mm	D mm	E mm	F mm	G mm
SME010-002-22B	22MM	22.4	30	54	7.4	15	2	5.5
SME010-002-25B	25MM	25.7	30	57	7.5	15	6.2	5.5

Double Set Screw Jaw Slide



ITEM NO.	SPEC	A mm	B mm	C mm	D mm	E mm	F mm	G mm
SME010-003-7/8"	22MM	22.6	62	32	7.5	18	6	5.5
SME010-003-1"	25MM	25.8	62	32	7.5	18	6	5
SME010-003-30	30MM	30.5	67	34	7.5	18	6	5.5
SME010-003-1 1/4"	32MM	32.5	68	34	7.5	8	6	5



Top Slide

ITEM NO.	SPEC	A mm	B mm	C mm	D mm	E mm
SME010-004-1"	25MM	26	25.9	59.2	8.9	M6



Jaw Slide

ITEM NO.	SPEC	A mm	B mm	C mm	D mm
SME010-005-22A	22MM	22	64	27	6
SME010-005-25A	25MM	25	69	28	6
SME010-005-30A	30MM	30	73	27	6
SME010-005-32A	32MM	31.5	73	27	6
SME010-005-38	38MM	38	85	28.5	6
SME010-005-50	50MM	50	103	32	6



Split Rail Jaw Slide

ITEM NO.	SPEC	A mm	B mm	C mm	D mm
SME010-006-7/8"	22MM	22	72	32	6
SME010-006-1"	25MM	25	75	31	6
SME010-006-30	30MM	30			6
SME010-006-1 1/4"	32MM	31.5			6



Jaw Slide w/Boat Pin&Cam Clamp

ITEM NO.	SPEC	A mm	B mm	C mm	D mm
SME010-008-7/8"	22MM	22	72	32	6
SME010-008-1"	25MM	25	75	32	6

DECK HINGE



Deck Hinge with Removable Pins

ITEM NO.	SPEC	A mm	B mm	C mm	D mm	E mm	F mm
SME011-001-01X	Deck Hinge with Removable Pins	60	37	19	8.4	6.2	40



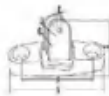
Concave Base Deck Hinge with Removable Pins

ITEM NO.	SPEC	A mm	B mm	C mm	D mm	E mm	F mm
SME011-002-22X	Concave Base Deck Hinge	60	37.6	19	7.8	6	40
SME011-002-25X	with Removable Pins	56.5	36	15.2	7.3	6	40



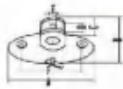
Heavy Duty Deck Hinge

ITEM NO.	SPEC	A mm	B mm	C mm	D mm	E mm	F mm
SME011-005-01	Heavy Duty Deck Hinge	52.2	30	26	10.2	7.8	37



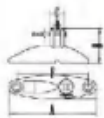
Deck Hinge Swivel

ITEM NO.	SPEC	A mm	B mm	C mm	D mm	E mm	F mm
SME011-006-01X	Deck Hinge Swivel	70	47.2	14	7.6	6.2	51



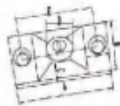
Deck Hinge Swivel

ITEM NO.	SPEC	A mm	B mm	C mm	D mm	E mm	F mm
SME011-007-01	Deck Hinge Swivel	86.5	52.7	24.6	8.1	6	62



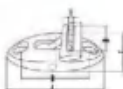
Deck Hinge Adjustable Swivel

ITEM NO.	SPEC	A mm	B mm	C mm	D mm	E mm	F mm	G mm
SME011-008-01		81.5	35	15.8	7.4	6.2	63.5	32
SME011-008-02		92	35	15.8	7.4	6.2	63.5	31



Deck Hinge Side Mounted

ITEM NO.	SPEC	A mm	B mm	C mm	D mm	E mm
SME011-009-01		50.8	22.2	16.5	M6	36
SME011-009-02		50.8	19	16.5	M6	36



Side Buckle

ITEM NO.	SPEC	A mm	B mm	C mm	D mm	E mm
SME011-010-01		73	50	30.7	23.6	2.4

BRACKET



Front Stanchion 60°

ITEM NO.	SPEC	A mm	B mm	C mm	D mm	E mm
SME012-001-22A	22MM	22.6	45	41.5	28	27
SME012-001-25A	25MM	25.8	45	41.5	28	27



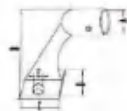
Medium Stanchion 60°

ITEM NO.	SPEC	A mm	B mm	C mm	D mm	E mm
SME012-001-22B	22MM	22.6	45	41.5	28	27
SME012-001-25B	25MM	25.8	45	41.5	28	27



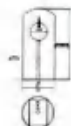
Tail Stanchion 60°

ITEM NO.	SPEC	A mm	B mm	C mm	D mm	E mm
SME012-001-22C	22MM	22.6	45	41.5	28	27
SME012-001-250	25MM	25.8	45	41.5	28	27



Hand Rail 60° tail Stanchion

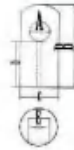
ITEM NO.	SPEC	A mm	B mm	C mm	D mm	E mm
SME012-004-22A	22MM	22.2	65	31	35	5.5
SME012-004-25A	25MM	25.4	65	31	35	5.5



Center Handrail Fitting Stanchion

ITEM NO.	SPEC	A mm	B mm	C mm	D mm	E mm
SME012-007-22	22MM	22.6	59	30.5	31	M8
SME012-007-25	25MM	25.6	64	35	32.5	M8

Handrail Fitting End Stanchion



ITEM NO.	SPEC	A mm	B mm	C mm	D mm	E mm
SME012-007-22M	22MM	22.6	59	30.5	31	M8
SME012-007-25M	25MM	25.6	64	35	32.5	M8

InnerDiameter Rail End



ITEM NO.	SPEC	A mm	B mm	C mm	D mm	E mm	F mm
SME012-008-7/8*	22MM	120	39	22.6	8.8	5	42

Rail End Tubing Handrail



ITEM NO.	SPEC	A mm	B mm	C mm	D mm	E mm
SME012-009-7/8*	22MM	110	29	19.6	5	25.4

Inner Diameter Rail End



ITEM NO.	SPEC	A mm	B mm	C mm	D mm
SME012-010-7/8*	22MM	175	50	22.5	M6
SME012-010-1*	25MM	175	51	25.7	M6

Center Handrail Stanchion



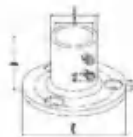
ITEM NO.	SPEC	A mm	B mm	C mm	D mm
SME012-013-7/8	Center Handrail Stanchion	45.3	57.3	5.3	22.4
SME012-013-1*	Center Handrail Stanchion	60.7	45.3	5.3	25.7

ROUND BASE

Round Base 30°45°60°



ITEM NO.	SPEC	A mm	B mm	C mm	D mm	E mm
SME013-001-3022	30°22MM	22.8	29	65	37	5
SME013-001-3025	30°25MM	25.8	32	72	37	5
SME013-001-4522	45°22MM	22.5	29	66	38	5.5
SME013-001-4525	45°25MM	25.8	32	72	40	5.5
SME013-001-6022	60°22MM	22.5	29	66	40	5
SME013-001-6025	60°25MM	25.8	32	70	40	5
SME013-001-6030	60°30MM	30.5	37	72	49	5
SME013-001-6032	60°32MM	32.7	40	72.5	53	5



Round Base 90°

ITEM NO.	SPEC	A mm	B mm	C mm	D mm	E mm
SME013-001-9022	90°22MM	22.7	28	66	45.5	4.5
SME013-001-9025	90°25MM	25.8	32.2	69	46	4.5
SME013-001-9030	90°30MM	30.7	36.5	72	46	4.5
SME013-001-9032	90°32MM	32.2	39	75	42	4.5

Rectangular Base 30°45°60°



ITEM NO.	SPEC	A mm	B mm	C mm	D mm	E mm
SME013-002-3022	30°22MM	22.4	28	79	44	37
SME013-002-3025	30°25MM	26	32.2	83	47.5	39
SME013-002-4522	45°22MM	22.7	28.5	79	44	41
SME013-002-4525	45°25MM	25.9	32.5	83	47.5	46
SME013-002-6022	60°22MM	22.7	28.8	79	44	49
SME013-002-6025	60°25MM	25.8	32	82	47.5	45.5
SME013-002-6030	60°30MM	30.8	38.2	87	52.5	55
SME013-002-6032	60°32MM	32.8	40.2	87	52.5	55



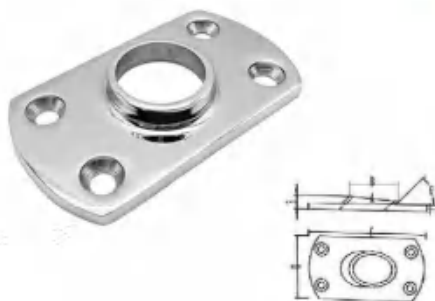
Rectangular Base

ITEM NO.	SPEC	A mm	B mm	C mm	D mm	E mm
SME013-002-9022	22MM	22.4	28.5	76	44	45
SME013-002-9025	25MM	25.8	31.8	82	47.5	45.5
SME013-002-9030	30MM	30.7	36.5	86	52	46
SME013-002-9032	32MM	32.5	40	87	52	46



Weldable Round Base

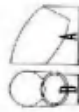
ITEM NO.	SPEC	A mm	B mm	C mm	D mm	E mm	F mm
SME013-003-4522	45°22MM	22.7	28	66	13.5	5	45°
SME013-003-4525	45°25MM	25.5	32	79.5	13.5	5	45°
SME013-003-6022	60°22MM	22.5	29	66	14.5	5	60°
SME013-003-6025	60°25MM	25.8	32	70	15.5	5	60°
SME013-003-9022	90°22MM	22.3	28	66	16.5	5	90°
SME013-003-9025	90°25MM	25.5	31.8	75	16.5	5	90°



Weldable Rectangular Base

ITEM NO.	SPEC	A mm	B mm	C mm	D mm	E mm	F mm	G mm
SME013-004-4522	45°22MM	22.5	28	77	43	16	5	45°
SME013-004-4525	45°25MM	25.4	31.5	78	44	17	5	45°
SME013-004-6022	60°22MM	22.5	28	77	44	17	5	60°
SME013-004-6025	60°25MM	25.5	32	78	44	17	5	60°
SME013-004-9022	90°22MM	22.6	27.5	78.5	44	12	5	90
SME013-004-9025	90°25MM	25.6	31.5	77.5	43.5	2.5	5	90°

FLAGPOLE BASE



Pulpit Base 60°

ITEM NO.	SPEC	A mm	B mm
SME014-001-6025	25MM	25.6	65
SME014-001-6030	30MM	30.5	61
SME014-001-6032	32MM	32.5	68



Pulpit Base 90°

ITEM NO.	SPEC	A mm	B mm
SME014-001-9025	25MM	25.6	66
SME014-001-9030	30MM	30.5	62
SME014-001-9032	32MM	32.6	61



Pipe Base 60°

ITEM NO.	SPEC	A mm	B mm
SME014-002-6025	25MM	25.5	66
SME014-002-6030	30MM	30.5	80
SME014-002-6032	32MM	32.5	82
SME014-002-6032	38MM	38.5	87



Pipe Base 90°

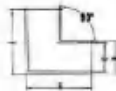
ITEM NO.	SPEC	A mm	B mm
SME014-002-9025	25MM	25.6	70
SME014-002-9030	30MM	30.5	80
SME014-002-9032	32MM	32.5	80
SME014-002-9032	38MM	38.5	80

RAIL CONNECTOR



Rail Connector

ITEM NO.	SPEC	A mm	B mm	C mm
SME015-001-1*	25MM	70	25.8	32
SME015-001-1 1/4*	32MM	100	33	40



Corner Elbow 90°

ITEM NO.	SPEC	A mm	B mm	C mm	D mm
SME015-002-7/8*	22MM	50	50	22.6	22.6
SME015-002-1*	25MM	51	51	25.6	31
SME015-002-30	30MM	54	54	30.6	36.5
SME015-002-1 1/4*	32MM	58	58	32.5	39.5



Tee Rail Connector 60°

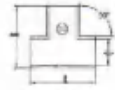
ITEM NO.	SPEC	A mm	B mm	C mm	D mm
SME015-003-6022	22MM	51	59	22.7	29
SME015-003-6025	25MM	54	63	25.8	32
SME015-003-6030	30MM	75	78	30.8	36.5
SME015-003-6032	32MM	75	78	32.8	38.5
SME015-004-6022	60°22MM	49	57	22.7	29.3
SME015-004-6025	60°25MM	53	60	25.8	32



Tee Rail Connector 90°

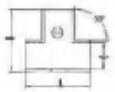
ITEM NO.	SPEC	A mm	B mm	C mm	D mm
SME015-006-9022	22MM	53	52	22.6	29.2
SME015-006-9025	25MM	54	52	25.8	32
SME015-006-9030	30MM	76	82	30.6	37.2
SME015-006-9032	32MM	77	86	32.6	39.5
SME015-006-9038	38MM	85	85	38	45

Tee Rail Connector Split 60°



ITEM NO.	SPEC	A mm	B mm	C mm
SME015-007-6022	22MM	48	57	22
SME015-007-6025	25MM	52	60	25

Tee Rail Connector Split



ITEM NO.	SPEC	A mm	B mm	C mm
SME015-007-9022	22MM	52	52	22
SME015-007-9025	25MM	55	55	25

Tee Rail Connector with Eye End 60°



ITEM NO.	SPEC	A mm	B mm	C mm
SME015-008-6022	22MM	48	47	23

Three Way Tee Rail Connector

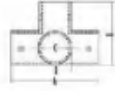


ITEM NO.	SPEC	A mm	B mm	C mm	D mm
SME015-009-7/8"	22MM	50	50	22.6	28.6
SME015-009-1"	25MM	50	50	25.8	31
SME015-009-30	30MM	56	56	30.8	36.8
SME015-009-11/4"	32MM	58	58	32.8	39
SME015-009-11/2"	38MM	80	80	38.8	45

Tee Rail Connector with Eye End



ITEM NO.	SPEC	A mm	B mm	C mm
SME015-008-9022	22MM	52	52	22.6



Fore Way Tee Rail Connector

ITEM NO.	SPEC	A mm	B mm	C mm	D mm
SME015-010-9022	22MM	69	50	22.8	29.5
SME015-010-9025	25MM	69	50	25.8	32



Fore Way Cross Rail Connector

ITEM NO.	SPEC	A mm	B mm	C mm	D mm
SME015-011-9022	22MM	72	72	22.7	28.5
SME015-011-9025	25MM	72	72	25.8	32.5
SME015-011-9030	30MM	75	75	30.5	36.5
SME015-011-9032	32MM	81	81	32.6	39



Cross Tube Clamp

ITEM NO.	SPEC	A mm	B mm	C mm	D mm	E mm
SME015-012-1"	25MM	60	60	23.5	46	45.5



Sivering Joint

ITEM NO.	SPEC	A mm	B mm	C mm	D mm
SME015-013-7/8"	22MM	76	32	22.5	28.8
SME015-013-1"	25MM	76	32	25.8	32
SME015-014-30	30MM	87	43.2	30.5	36
SME015-013-1 1/4"	32MM	80	34	32.8	39

HAND RAIL



Lift Handle

ITEM NO.	SPEC	A mm	B mm	C mm	D mm	E mm	F mm	G mm
SME016-001-150	Lift Handle	150	77	48.5	47	36	29	126



Lift Handle

ITEM NO.	SPEC	A mm	B mm	C mm	D mm	E mm
SME016-002-170T	170MM	170	104	41	32	124



Lift Handle

ITEM NO.	SPEC	A mm	B mm	C mm	D mm	E mm	F mm
SME016-002-170	170MM	170	104	41	32	124	M8



Lift Handle

ITEM NO.	SPEC	A mm	B mm	C mm	D mm	E mm	F mm
SME016-003-300T	300MM	300	230	48	40	268	8.5

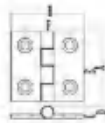


Lift Handle

ITEM NO.	SPEC	A mm	B mm	C mm	D mm	E mm	F mm
SME016-003-300	300MM	300	230	48	40	268	M8

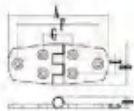
CASTING HINGE

CASTING HINGE



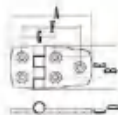
ITEM NO.	SPEC	A mm	B mm	C mm	D mm	E mm	F mm
SME018-001-3838	38*38	38	38	3.7	8	24	24
SME018-001-4040	40*40	40	40	3.7	8	25	25
SME018-001-5050	50*50	50	50	4.5	10	34.5	34.5
SME018-001-6060	60*60	60	60	5	15	-	-
SME018-001-7575	75*75	75	75	6	16	40	49

CASTING HINGE



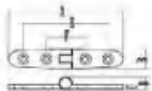
ITEM NO.	SPEC	A mm	B mm	C mm	D mm	E mm	F mm	G mm
SME018-002-7638	76*38	76	38	5	9.4	21	61.5	25.5
SME018-004-10238	102*38	102	38	5.1	10.2	20.8	87	27

CASTING HINGE



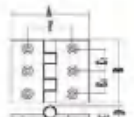
ITEM NO.	SPEC	A mm	B mm	C mm	D mm	E mm	F mm	G mm
SME018-003-5738	57*38	57	38	4.5	9	19	42	25
SME018-003-7638	76*38	76	38	4.4	9.1	20	57	27.5

CASTING HINGE

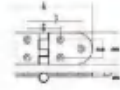


ITEM NO.	SPEC	A mm	B mm	C mm	D mm	E mm	F mm
SME018-005-9623	96*32	96	32	5	9.7	82	31
SME018-005-10226	102*26	102	26	4.5	9	84	33
SME018-006-16027	160*27	27	5	9.5	142	85	30

CASTING HINGE

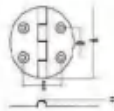


ITEM NO.	SPEC	A mm	B mm	C mm	D mm	E mm	F mm
SME018-007-100100T	100*100	100	100	6	15.7	30	60
SME018-007-100100	100*100	100	100	6	15.7	30	60



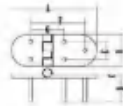
Casting Hinge

ITEM NO.	SPEC	A mm	B mm
SME018-008-7640	76*40	76	40



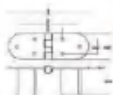
Casting Hinge

ITEM NO.	SPEC	A mm	B mm	C mm	D mm	E mm
SME018-009-2 1/2"	64MM	64	3.5	7.7	25	34



Casting Hinge

ITEM NO.	SPEC	A mm	B mm
SME018-010-14665A	146*65	146.0	65.0
SME018-010-12640A	126*40	126	40
SME018-010-14665B	146*65	146.0	65.0
SME018-010-12640B	126*40	126	40



Casting Hinge

ITEM NO.	SPEC	A mm	B mm	C mm	D mm	E mm	F mm	G mm
SME018-011-19065A	190*65	190	65	4.3	8	35	127	55
SME018-011-19065B	190*65	190	65	4.3	8	35	127	55



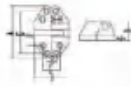
Casting Hinge

ITEM NO.	SPEC	A mm	B mm	C mm	D mm	E mm	F mm
SH018-014-7040	70*40	70	40	3.5	6	22	37



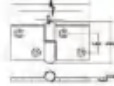
Casting Hatch Hinge

ITEM NO.	SPEC	A mm	B mm	C mm
SME018-015-01	Casting Hatch Hinge	56.4	75.3	34



Heavy Casting Hatch Hinge

ITEM NO.	SPEC	A mm	B mm	C mm	D mm	E mm	F mm	G mm	H mm
SME018-015-02	Casting Hatch Hinge	76	55	6.3	32	60	38	35	16
SME018-015-03	Casting Hatch Hinge	76	66	6.3	32	60	38	47.5	28



Left Casting Hinge

ITEM NO.	SPEC	A mm	B mm	C mm	D mm	E mm	F mm	G mm
SME018-016-9050L	90*38	90	50	5	8.3	24.3	76.5	41.5



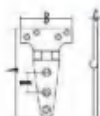
Casting Hinge

ITEM NO.	SPEC	A mm	B mm	C mm	D mm	E mm	F mm
SME018-017-6542	65*42	64.5	41.5	4	7.5	34.5	25.5



Casting Hinge

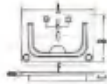
ITEM NO.	SPEC	A mm	B mm	C mm	D mm	E mm	F mm
SME018-018-7642	76*42	76	42	2.5	8	30.5	28
SME018-019-7550A	75*50	75	50	5	11	28	30
SME018-019-7550B	75*50	75	50	5	11	28	30



Heavy Duty T Casting Hinge

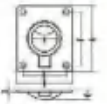
ITEM NO.	SPEC	A mm	B mm	C mm	D mm
SME018-020-10054	100*54	100	54	4.8	21
SME018-020-15072	150*72	150	72	4.5	40
SME018-020-19697	196*97	196	97	5.8	

LIFT RING



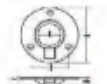
Square FluSME Lift Ring

ITEM NO.	SPEC	A mm	B mm	C mm	D mm	E mm	F mm	G mm
SME019-001-7658	75*58	76	58	10.3	2.5	25.5	65	48.6
SME019-001-7860	78*60	78	60	0.3	2.5	25.5	65	48.6



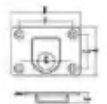
Square FluSME Lift Ring

ITEM NO.	SPEC	A mm	B mm	C mm	D mm	E mm	F mm	G mm
SME019-002-4838	48*38	48	38	12	2.5	27	37	20.7
SME019-002-6244	62*44	62	44	12	3.3	31	50	24.3



Round FluSME Lift Ring

ITEM NO.	SPEC	A mm	B mm	C mm	D mm	E mm
SME019-003-50	50MM	50	10.8	2.7	36	21.3



Square FluSME Lift Ring

ITEM NO.	SPEC	A mm	B mm	C mm	D mm	E mm	F mm	G mm
SME019-004-5575	55*75	55	75	4	2.8	44	54	25
SME019-004-4538	54*38	45	38	10.5		28.5	36	8.5
SME019-004-6656	66*56	66	56	14.5	2.8	44	54	25

NON-SLIP FOLDING STEP PEDAL



ITEM NO.	SPEC	A mm	B mm	C mm	D mm	E mm	F mm
SME19-005-12580	125*80	124	107	81	40	85.5	90
SME19-005-165120	165*120	165	40	20	44	12	10



ITEM NO.	SPEC	A mm	B mm	C mm	D mm	E mm	F mm
SME19-005-12080	120*80	125	109	84	46.5	84.5	90

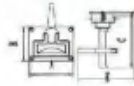


ITEM NO.	SPEC	A mm	B mm	C mm	D mm	E mm	F mm
SME19-005-135110	135*110	134	18.3	81	43.3	95	100



ITEM NO.	SPEC	A mm	B mm	C mm	D mm	E mm	F mm
SME19-005-195110	195*110	195	110	90	200	90	161

LOCK RING



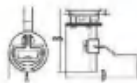
Turning Lock Lift Handle

ITEM NO.	SPEC	A mm	B mm	C mm	D mm	E mm
SH020-001-01	Turning Lock Lift Handle	80	68	110	37	91



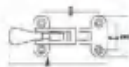
Turning Lock Lift Handle with Key

ITEM NO.	SPEC	A mm	B mm	C mm	D mm
SH020-002-02B	Turning Lock Lift Handle with Key	60	80	501	70



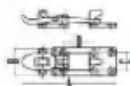
Turning Lock D Lift Ring

ITEM NO.	SPEC	A mm	B mm	C mm	D mm
SH020-003-01	Turning Lock D Lift Ring	60	102	52	120
SH020-003-02	Turning Lock D Lift Ring	90	102	76	148



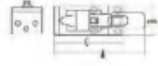
Anti-Rattle Latch Fastener

ITEM NO.	SPEC	A mm	B mm	C mm	D mm
SH020-004-01	Anti-Rattle Latch Fastener	113	49	28	65



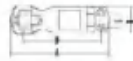
Anti-Rattle Latch Fastener

ITEM NO.	SPEC	A mm	B mm	C mm	D mm
SH020-004-02	Anti-Rattle Latch Fastener	90	28.5	18	24



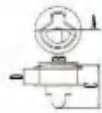
Anti-Rattle Latch Fastener

ITEM NO.	SPEC	A mm	B mm	C mm
SH020-004-02B	Latch Fastene	81	28.5	64



Anti-Rattle Latch Fastener

ITEM NO.	SPEC	A mm	B mm	C mm	D mm
SH020-004-03	Latch Fastener	93	26	15	69



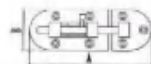
Turning Lock Lift Handle With kye

ITEM NO.	SPEC	A mm	B mm	C mm	D mm
SH020-005-02	Turning Lock Lift Handle	61	50.5	37	12.5



Turning Lock Lift Handle

ITEM NO.	SPEC	A mm	B mm	C mm	D mm
SH020-006-01	50	50	60.4	11	7.5



Barrel Bolt

ITEM NO.	SPEC	A mm	B mm
SH020-007-90A	Barrel Bolt	90	39
SH020-007-108A	Barrel Bolt	108	31

DECK FILLER



Deck Fill with Key Cap

ITEM NO.	SPEC	A mm	B mm	C mm	D mm	E mm	F mm
SME021-001-11/2*FUEL	38MM	75	86	45.5	39	33	31
SME021-001-11/2*DIESE	38MM	75	86	45.5	39	33	31
SME021-001-11/2*WASTE	38MM	75	86	45.5	39	33	31
SME021-001-11/2*WATER	38MM	75	86	45.5	39	33	31
SME021-001-11/2*GAS	38MM	75	86	45.5	39	33	31



Deck Fill with Key Cap

ITEM NO.	SPEC	A mm	B mm	C mm	D mm	E mm
SME021-001-2*FUEL	50MM	80	85	51.4	44.5	31
SME021-001-2*DIESE	50MM	80	85	51.4	44.5	31
SME021-001-2*WASTE	50MM	80	85	51.4	44.5	31
SME021-001-2*WATER	50MM	80	85	51.4	44.5	31
SME021-001-2*GAS	50MM	80	85	51.4	44.5	31



Deck Fill Cap Keyless

ITEM NO.	SPEC	A mm	B mm	C mm	D mm	E mm
SME021-002-11/2*FUEL	38MM	75	86	45.5	39	33
SME021-002-11/2*DIESE	38MM	75	86	45.5	39	33
SME021-002-11/2*WASTE	38MM	75	86	45.5	39	33
SME021-002-11/2*WATER	38MM	75	86	45.5	39	33
SME021-002-11/2*GAS	38MM	75	86	45.5	39	33



Deck Fill Cap Keyless

ITEM NO.	SPEC	A mm	B mm	C mm	D mm
SME021-002-2*FUEL	50MM	80	85	51.4	44.5
SME021-002-2*DIESE	50MM	80	85	51.4	44.5
SME021-002-2*WASTE	50MM	80	85	51.4	44.5
SME021-002-2*WATER	50MM	80	85	51.4	44.5
SME021-002-2*GAS	50MM	80	85	51.4	44.5

Deck Fill Cap Keyless



ITEM NO.	SPEC	A mm	B mm	C mm	D mm	E mm
SME021-003-11/2*FUEL	38MM	75	86	45.5	39	33
SME021-003-11/2*DIESE	38MM	75	86	45.5	39	33
SME021-003-11/2*WASTE	38MM	75	86	45.5	39	33
SME021-003-11/2*WATER	38MM	75	86	45.5	39	33

Deck Fill Cap Keyless



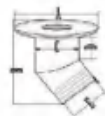
ITEM NO.	SPEC	A mm	B mm	C mm	D mm
SME021-003-2*FUEL	50MM	75	86	39	33
SME021-003-2*DIESE	50MM	75	86	39	33
SME021-003-2*WASTE	50MM	75	86	39	33
SME021-003-2*WATER	50MM	75	86	39	33

Deck Fill Cap Keyless-Angled Neck



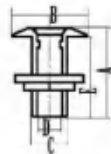
ITEM NO.	SPEC	A mm	B mm	C mm	D mm	E mm
SME021-004-11/2*FUEL	38MM	83	80	45.5	31	39
SME021-004-11/2*DIESE	38MM	83	80	45.5	31	39
SME021-004-11/2*WASTE	38MM	83	80	45.5	31	39
SME021-004-11/2*WATER	38MM	83	80	45.5	31	39

Deck Fill Cap Keyless Angled Neck



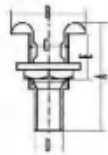
ITEM NO.	SPEC	A mm	B mm	C mm	D mm	E mm
SME021-004-2*FUEL	50MM	89	100	51	33	51.5
SME021-004-2*DIESE	50MM	89	100	51	33	51.5
SME021-004-2*WASTE	50MM	89	100	51	33	51.5
SME021-004-2*WATER	50MM	89	100	51	33	51.5

OUTLET



Through Hull Outlet

ITEM NO.	SPEC	A mm	B mm	C mm	D mm	E mm
SME022-001-3/8"	3/8"	59	35	16.5	11	54
SME022-001-1/2"	1/2"	63	40	21	14	58
SME022-001-3/4"	3/4"	75	49	26	19	69
SME022-001-1"	1"	78.5	54	33.5	25.4	72
SME022-001-1 1/4"	1 1/4"	84	64	43	34.5	78.5
SME022-001-1 1/2"	1 1/2"	85	72	48	38.5	79
SME022-001-2"	2"	100	85	60	50.8	95
SME022-001-2 1/2"	2 1/2"	119	101	75	64.5	110



Thru Hull With Hose

ITEM NO.	SPEC	A mm	B mm	C mm	D mm	E mm
SME022-002-1/2"	1/2"	58	35	16.5	14	31
SME022-002-3/4"	3/4"	63	40	21	18.5	33
SME022-002-7/8"	7/8"	75	49	26.2	23	42
SME022-002-1"	1"	78	54	33	26	43
SME022-002-1 1/4"	1 1/4"	85	57	42	33.5	47
SME022-002-1 1/2"	1 1/2"	85	63	42	39.5	47
SME022-002-1 3/4"	1 3/4"	87	71	49	46	48
SME022-002-2"	2"	100	85	59	52	50



Through Hull Outlet with Hose Connection

ITEM NO.	SPEC	A mm	B mm	C mm	D mm
SME022-002-3/4*B	3/4"	96	26	19.7	54
SME022-002-1*B	1"	96	33	25.5	54
SME022-002-1 1/2*B	1 1/2"	96	47.5	39	54

INTAKE STRAINER



Intake Strainer

ITEM NO.	SPEC	A mm	B mm	C mm	D mm	E mm
SME023-001-3/8"	3/8"	90	82	16.5	11	65
SME023-001-1/2"	1/2"	90	82	21	12.5	66
SME023-001-3/4"	3/4"	107	104	26	18.5	80
SME023-001-1"	1"	106	106	33	25.5	76
SME023-001-1 1/4"	1 1/4"	103	117	42	32	77
SME023-001-1 1/2"	1 1/2"	109	133	47.5	38	80
SME023-001-2"	2"	124	152	60	50	91
SME023-001-2 1/2"	2 1/2"	153	198	75	63.5	111
SME023-001-3"	3"	178	240	88	76	130

Ball Valve



ITEM NO.	SPEC	A mm	B mm
SME023-002-DN8	1/4"	12.5	11.5
SME023-002-DN10	3/8"	16	15
SME023-002-DN15	1/2"	20	19
SME023-002-DN20	3/4"	25.5	24
SME023-002-DN25	1"	32	30
SME023-002-DN32	1 1/4"	40.5	39
SME023-002-DN40	1 1/2"	46	44
SME023-002-DN50	2"	58	56.5
SME023-002-DN65	2 1/2"	74	72.5
SME023-002-DN80	3"	86	84.5

Water Strainer



ITEM NO.	SPEC	A mm	B mm	C mm	D mm	E mm
SME023-003-3/4"B	3/4"	180	142	86	70	123
SME023-003-1"B	1"	180	142	86	70	123
SME023-003-1 1/4"B	1 1/4"	200	200	105	100	143
SME023-003-1 1/2"B	1 1/2"	200	200	105	100	143
SME023-003-2"B	2"	200	220	125	115	160

TANK VENT

Cowl Vent



ITEM NO.	SPEC	A mm	B mm	C mm
SME024-001-1/2"	1/2"	65	21	14.5
SME024-001-3/4"	3/4"	65	26	19
SME024-001-1"	1"	75	34	26.5
SME024-001-1 1/4"	1 1/4"	78	42	35
SME024-001-1 1/2"	1 1/2"	83	48	39
SME024-001-2"	2"	90	59	50.8

Cowl Vent



ITEM NO.	SPEC	A mm	B mm	C mm	D mm
SME024-002-01	16mm	82	12	64	27

Cowl Vent



ITEM NO.	SPEC	A mm	B mm	C mm	D mm	E mm
SME024-002-02	Cowl vent	84	16	12	36	26

Tank Vent



ITEM NO.	SPEC	A mm	B mm	C mm	D mm	E mm
SME024-003-01	16mm	65	16	12	51	27

Tank Vent



ITEM NO.	SPEC	A mm	B mm	C mm	D mm	E mm
SME024-003-02	Tank Vent	84	16	12	36	26

DRAIN



Cockpit Drain

ITEM NO.	SPEC	A mm	B mm	C mm	D mm	E mm
SME025-001-9038	Cockpit Drain	82	58	38	60	50



Cockpit Drain

ITEM NO.	SPEC	A mm	B mm	C mm	D mm	E mm
SME025-002-50A	Cockpit Drain	82	51.5	80	50	6



Cockpit Drain

ITEM NO.	SPEC	A mm	B mm	C mm	D mm	E mm
SME025-002-50B	Cockpit Drain	82	51.5	80	50	6

90 Degree Cockpit Drain

ITEM NO.	SPEC	A mm	B mm	C mm	D mm	E mm	F mm
SME025-003-32A	90°	79	80	103	32.5	56.5	50
SME025-003-38A	90°	79	80	103	39	56	50
SME025-003-32B	32MM	79	80	103	32.5	56.5	50
SME025-003-38B	38MM	79	80	103	32.5	56.5	50



Cockpit Drain

ITEM NO.	SPEC	A mm	B mm	C mm	D mm	E mm
SME025-004-30	Cockpit Drain	79	50	56	29	23



Cockpit Ball Type Drain

ITEM NO.	SPEC	A mm	B mm	C mm	D mm	E mm
SME025-005-38	Ball Type Drain	92	115	40	57	41



ROD HOLDER

Flush Mount Rod Holder

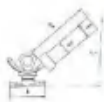
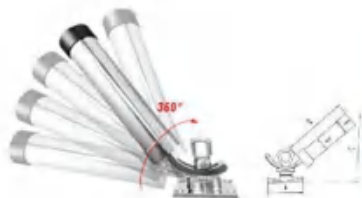


ITEM NO.	SPEC	A mm	B mm	C mm
SME026-002-6050	50MM	210	112	60°
SME026-010-15		229	1 1/2	15°
SME026-010-30		229	1 1/2	30°



Flush Mount Rod Holder

ITEM NO.	SPEC	A mm	B mm	C mm	D mm
SME026-002-9050	50MM	230	50.5	230	90°



All Angle Rod Holder Adjustable

ITEM NO.	SPEC	A mm	B mm	C mm	D mm
SME025-004-02	All Angle Rod Holder Adjustable	92	290	360	51

Clamp on Rod Holder Adjustable



ITEM NO.	SPEC	A mm	B mm	C mm
SME026-005-2225	Clamp on Rod Holder Adjustable	254	1 5/8	7/8-1
SME026-005-2532	Clamp on Rod Holder Adjustable	254	1 5/8	1-1 1/4
SME026-005-3250	Clamp on Rod Holder Adjustable	254	1 5/8	1 1/4-2



Double Wire Snapper Back Rod Holder

ITEM NO.	SPEC	A mm	B mm	C mm	D mm
SME026-007-25	Double Wire Snapper Back Rod Holder	170	50	95	22-25
SME026-007-32	Double Wire Snapper Back Rod Holder	170	50	95	29-32



FluSME Mount Rod Holder-Narrow Flange

ITEM NO.	SPEC	A mm	B mm	C mm
SME026-008-20	Rod Holder	210	41	79*59
SME026-008-30	Rod Holder	210	41	79*59
SME026-008-90	Rod Holder	210	41	79*59



Rack Mount Rod Holder

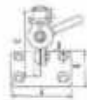
ITEM NO.	SPEC	A mm	B mm	C mm	D mm	E mm
SME026-009-03	Rack Mount Rod Holder	220	295	172	42	295



Clamp On Rod Holder Adjustable

ITEM NO.	SPEC	A mm	B mm	C mm
SME026-011-3198	Rod Holder	254	1	1 5/8

ANTENNA BASE



Antenna Adjustable Base Mount

ITEM NO.	SPEC	A mm	B mm	C mm	D mm	E mm
SME027-001-01	Antenna Base	93	63	112	8	25



Antenna Adjustable Base Mount

ITEM NO.	SPEC	A mm	B mm	C mm	D mm
SME027-002-22	Antenna Base	22	71	25.4	225



Antenna Adjustable Base Mount

ITEM NO.	SPEC	A mm	B mm	C mm	D mm
SME027-002-25	Antenna Base	25	80	35	97

BOAT HOOK



Heavy Boat Hook

ITEM NO.	SPEC	A mm	B mm	C mm	D mm	E mm
SME028-001-01	Boat Hook	188	37	31	4.5	4.5



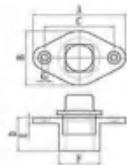
Boat Hook

ITEM NO.	SPEC	A mm	B mm	C mm	D mm	E mm
SME028-002-28	28MM	170	35	28	4.5	4.5
SME028-002-34	34MM	188	50	34	6.5	6.5



Boat Cup Holder

ITEM NO.	SPEC	A mm	B mm	C mm	D mm	E mm
SME032-001-01	Boat Cup Holder	108	91	.93	73	81



Drain Plug for Boats

ITEM NO.	SPEC	A mm	B mm	C mm	D mm	E mm	F mm	G mm
SME023-004-24	M24	50	37	35	35	5	25.5	5

DECK PLATE



Deck Plate

ITEM NO.	SPEC	A mm	B mm	C mm	D mm	E mm
SME029-001-3A	3"	123	78	86	5	6.5
SME029-001-4A	4"	140	102	110	5	6.5
SME029-001-5A	5"	177	126	136	5.5	6.5
SME029-001-6A	6"	197	152	160	5.5	6.5



Screw-Out Deck Plate

ITEM NO.	SPEC	A mm	B mm	C mm	D mm
SME029-001-3B	3"	123	78	86	5
SME029-001-4B	4"	140	102	110	5
SME029-001-5B	5"	177	126	136	5.5
SME029-001-6B	6"	197	152	160	5.5



Deck Plate with Star Pattern

ITEM NO.	SPEC	A mm	B mm	C mm	D mm
SME029-003-5"	5"	185	138	130	M6

LADDER



Telescopic Ladder

ITEM NO.	SPEC	A mm	B mm	C mm
SME030-001-01	Telescopic Ladder	250	230	1070



Folding Ladder

ITEM NO.	SPEC	A mm	B mm	C mm
SME030-002-01A	Folding Ladder	200	320	600
SME030-002-02A	Folding Ladder	235	449	600
SME030-002-03A	Folding Ladder	235	728	1085
SME030-002-04A	Folding Ladder	254	607	1085
SME030-002-05A	Folding Ladder	254	729	1315



Folding Ladder

ITEM NO.	SPEC	A mm	B mm	C mm
SME030-002-01B	Folding Ladder	200	320	600
SME030-002-02B	Folding Ladder	235	449	600
SME030-002-03B	Folding Ladder	235	728	1085
SME030-002-04B	Folding Ladder	254	607	1085
SME030-002-05B	Folding Ladder	254	729	1315



Telescopic Ladder

ITEM NO.	SPEC	A mm	B mm	C mm
SME030-003-01	Telescopic Ladder	1474	477	353



Telescopic Ladder

ITEM NO.	SPEC	A mm	B mm	C mm
SME030-004-01A	Two-step	23-1/2"	13-1/2"	
SME030-004-02A	Three-step	35"	14-1/2"	
SME030-004-03A	Four-step	45-1/2"	15-1/2"	
SME030-004-04A	Five-step	56"	16-1/2"	



Telescopic Ladder

ITEM NO.	SPEC	A mm	B mm	C mm
SME030-006-01	Two-step	603	404	
SME030-006-02	Three-step	870	430	
SME030-006-03	Four-step	1137	456	



Telescopic Ladder

ITEM NO.	SPEC	A mm	B mm	C mm
SME030-008-01	Telescopic Ladder	3/4"	18"	14"
SME030-008-02	Telescopic Ladder	3/4"	18"	14"
SME030-008-03	Telescopic Ladder	3/4"	18"	14"
SME030-008-04	Telescopic Ladder	3/4"	18"	14"
SME030-008-05	Telescopic Ladder	3/4"	18"	14"
SME030-008-06	Telescopic Ladder	3/4"	18"	14"



Telescopic Ladder

ITEM NO.	SPEC	A mm	B mm	C mm
SME030-011-01	Two-step	23-1/2"	23-1/2"	
SME030-011-02	Three-step	35"	14-1/2"	
SME030-011-03	Four-step	45-1/2"	15-1/2"	

STEERING WHEEL



STEERING WHEEL



ITEM NO.	SPEC	A mm	B mm	C mm
SME031-001-01	Five Spoke	11"	25°	3/4"
SME031-001-02	Five Spoke	11"	10°	3/4"
SME031-001-03	Five Spoke	13-1/2"	25°	3/4"
SME031-001-04	Five Spoke	13-1/2"	10°	3/4"
SME031-001-05	Five Spoke	15-1/2"	25°	3/4"
SME031-001-06	Five Spoke	15-1/2"	10°	3/4"
SME031-001-07	Five Spoke	18"	25°	3/4"
SME031-001-08	Five Spoke	18"	10°	3/4"
SME031-001-09	Five Spoke	20"	25°	3/4"
SME031-001-10	Five Spoke	20"	10°	3/4"



STEERING WHEEL

ITEM NO.	SPEC	A mm	B mm	C mm
SME031-002-01	Nive Spoke	13-1/2"	3/4"	15°
SME031-002-02	Nive Spoke	13-1/2"	3/4"	15°

STEERING WHEEL



ITEM NO.	SPEC	A mm	B mm	C mm
SME031-003-01	Five Spoke	13-1/2"	25°	3/4"
SME031-003-02	Five Spoke	13-1/2"	10°	3/4"
SME031-003-03	Five Spoke	13-1/2"	25°	3/4"
SME031-003-04	Five Spoke	13-1/2"	25°	3/4"
SME031-003-05	Five Spoke	13-1/2"	25°	3/4"
SME031-003-06	Five Spoke	15-1/2"	25°	3/4"
SME031-003-07	Five Spoke	15-1/2"	10°	3/4"
SME031-003-08	Five Spoke	15-1/2"	25°	3/4"
SME031-003-09	Five Spoke	15-1/2"	25°	3/4"
SME031-003-10	Five Spoke	15-1/2"	25°	3/4"



ITEM NO.	SPEC	A mm	B mm	C mm
SME031-005-01	Five Spoke	11"	3/4"	5
SME031-005-02	Five Spoke	13-1/2"	3/4"	5
SME031-005-03	Five Spoke	15-1/2"	3/4"	5

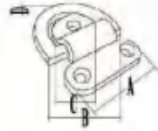


ITEM NO.	SPEC	A mm	B mm	C mm
SME031-006-01	Three Spoke	11"	3/4"	3
SME031-006-02	Three Spoke	13-1/2"	3/4"	3
SME031-006-03	Three Spoke		3/4"	3



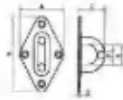
ITEM NO.	SPEC	A mm	B mm	C mm
SME031-007-01	Three Spoke	13-1/2"	3/4"	1"
SME031-007-02	Three Spoke	15-1/2"	3/4"	1"

PAD EYE



Folding Pad Eye With Washer

ITEM NO.	SPEC	A mm	B mm	C mm	D mm
SME040-001-08	D	57	62.5	39.5	8
SME040-001-09	D	63	69	43.5	9



Diamond Pad Eye

ITEM NO.	SPEC	A mm	B mm	C mm	D mm	E mm	F mm
SME040-301-05	5MM	36	60	21	2.5	14	5
SME040-301-06	6MM	40	65	26	2.5	16	6
SME040-301-08	8MM	50	80	32	3	20	8
SME040-301-10	10MM	60	100	38	3	26	10



Square Pad Eye

ITEM NO.	SPEC	A mm	B mm	C mm	D mm	E mm	F mm
SME040-302-05	5MM	30	35	21	2.5	14	5
SME040-302-06	6MM	35	40	26	2.5	16	6
SME040-302-08	8MM	40	50	32	3	20	8



Round Pad Eye

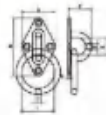
ITEM NO.	SPEC	A mm	B mm	C mm	D mm	E mm
SME040-303-05	5MM	33	21	2.5	14	5
SME040-303-06	6MM	40	26	2.5	16	6
SME040-303-08	8MM	50	32	3	20	8



Rectangle Pad Eye

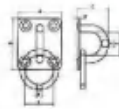
ITEM NO.	SPEC	A mm	B mm	C mm	D mm	E mm	F mm
SME040-304-05	5MM	15	45	21	2.5	14	5
SME040-304-06	6MM	20	60	26	2.5	16	6
SME040-304-08	8MM	25	80	32	3	20	8

Diamond Pad Eye with Ring



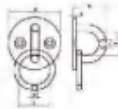
ITEM NO.	SPEC	A mm	B mm	C mm	D mm	E mm	F mm	G mm
SME040-305-05	5MM	36	60	21	2.5	14	5	30
SME040-305-06	6MM	40	65	26	2.5	16	6	35
SME040-305-08	8MM	50	80	32	3	20	8	45
SME040-305-10	10MM	60	100	38	3	26	10	50

Square Pad Eye with Ring



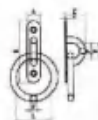
ITEM NO.	SPEC	A mm	B mm	C mm	D mm	E mm	F mm	G mm
SME040-306-05	5MM	30	35	21	2.5	14	5	30
SME040-306-06	6MM	35	40	26	2.5	16	6	35
SME040-306-08	8MM	40	50	32	3	20	8	45

Round Pad Eye with Ring



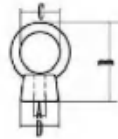
ITEM NO.	SPEC	A mm	B mm	C mm	D mm	E mm	F mm
SME040-307-05	5MM	33	21	2.5	14	5	30
SME040-307-06	6MM	40	26	2.5	16	6	35
SME040-307-08	8MM	50	32	3	20	8	45

Rectangle Pad Eye with Ring



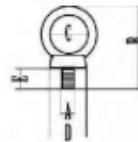
ITEM NO.	SPEC	A mm	B mm	C mm	D mm	E mm	F mm
SME040-308-05	15	45	21	2.5	14	5	30
SME040-308-06	20	60	26	2.5	16	6	35
SME040-308-08	25	80	32	3	20	8	45

RIGGING



JIS Eye Nut

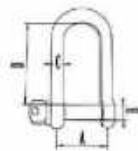
ITEM NO.	SPEC	A mm	B mm	C mm	D mm
SME041-001-06A	JIS Eye Nut	6	30	16	13
SME041-001-08A	JIS Eye Nut	8	39.3	20	16
SME041-001-10A	JIS Eye Nut	10	48.5	25	20
SME041-001-12A	JIS Eye Nut	12	61	30	25
SME041-001-16A	JIS Eye Nut	16	72	35	30
SME041-001-20A	JIS Eye Nut	20	86	40	35
SME041-001-24A	JIS Eye Nut	24	111	50	45



JIS Eye Bolt

ITEM NO.	SPEC	A mm	B mm	C mm	D mm	E mm
SME041-002-06B	JIS Eye Bolt	6	30	16	13	13
SME041-002-08B	JIS Eye Bolt	8	39.3	20	16	13
SME041-002-10B	JIS Eye Bolt	10	48.5	25	20	17
SME041-002-12B	JIS Eye Bolt	12	61	30	25	21
SME041-002-16B	JIS Eye Bolt	16	72	35	30	27
SME041-002-20B	JIS Eye Bolt	20	86	40	35	30
SME041-002-24B	JIS Eye Bolt	24	111	50	45	36

Dee Shackle



ITEM NO.	SPEC	A mm	B mm	C mm	D mm
SME042-001-04	4MM	4	4	8	16
SME042-001-05	5MM	5	5	10	19
SME042-001-06	6MM	6	6	13	25
SME042-001-08	8MM	8	8	16	32
SME042-001-10	10MM	10	10	19	38
SME042-001-12	12MM	12	12	25	51
SME042-001-16	16MM	16	16	32	64
SME042-001-20	20MM	20	20	38	76
SME042-001-22	22MM	22	22	44	89
SME042-001-25	25MM	25	25	51	100
SME042-001-28	28MM	28	28	57	115
SME042-001-32	32MM	32	32	64	127

Bow Shackle



ITEM NO.	SPEC	A mm	B mm	C mm	D mm
SH042-002-04	4MM	4	4	8	14
SH042-002-05	5MM	5	5	10	18
SH042-002-06	6MM	6	6	13	25
SH042-002-08	8MM	8	8	16	32
SH042-002-10	10MM	10	10	19	38
SH042-002-12	12MM	12	12	25	51
SH042-002-16	16MM	16	16	32	64
SH042-002-20	20MM	20	20	38	76
SH042-002-22	22MM	22	22	44	89
SH042-002-25	25MM	25	25	51	100
SH042-002-28	28MM	28	28	57	108
SH042-002-32	32MM	32	32	65	114



SINOSTAR

Sinostar Marine Equipment Co., Ltd.

Add: No. 8B Hong Kong Middle Road, Shinan
District, Qingdao, China

Email: sme@smeocean.com

Tel: +86 532 66888282

Web: www.smeocean.com